

# International Cooperation Department

**SPANISH RED CROSS**



**Cada vez más cerca de las personas**

 **Cruz Roja Española**

---

## MISSION

“Getting closer to vulnerable people at national and international level through preventive, welfare, recovery and development actions, performed essentially by volunteers”

## VISION

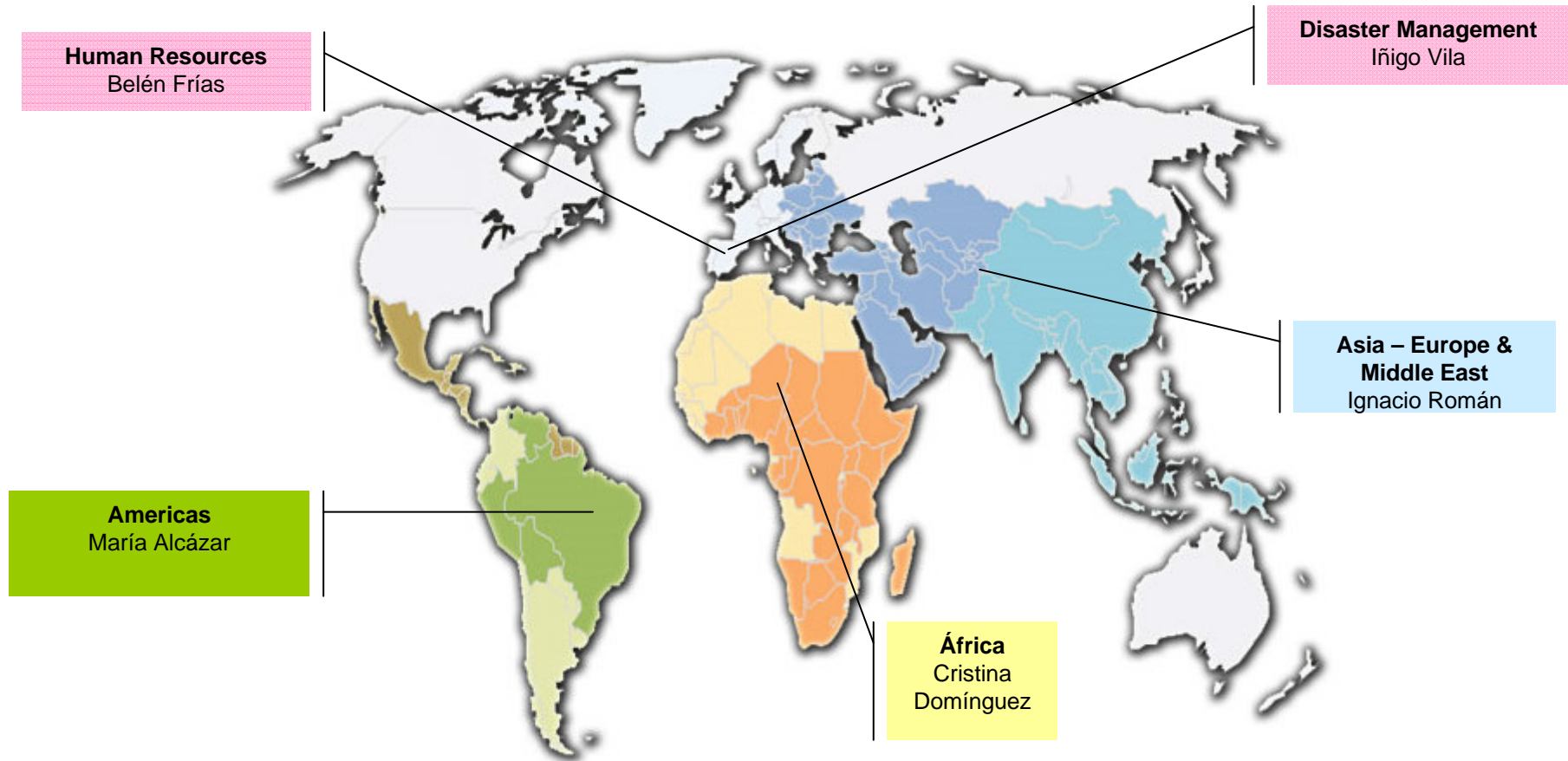
“The Spanish Red Cross as a humanitarian organisation with a well anchored voluntary service in society, will provide comprehensive answers from a development perspective to victims of disasters and emergencies, social, health and environmental problems”

**Cada vez más cerca de las personas**



# International Cooperation Department

Geographical Division at Headquarters level

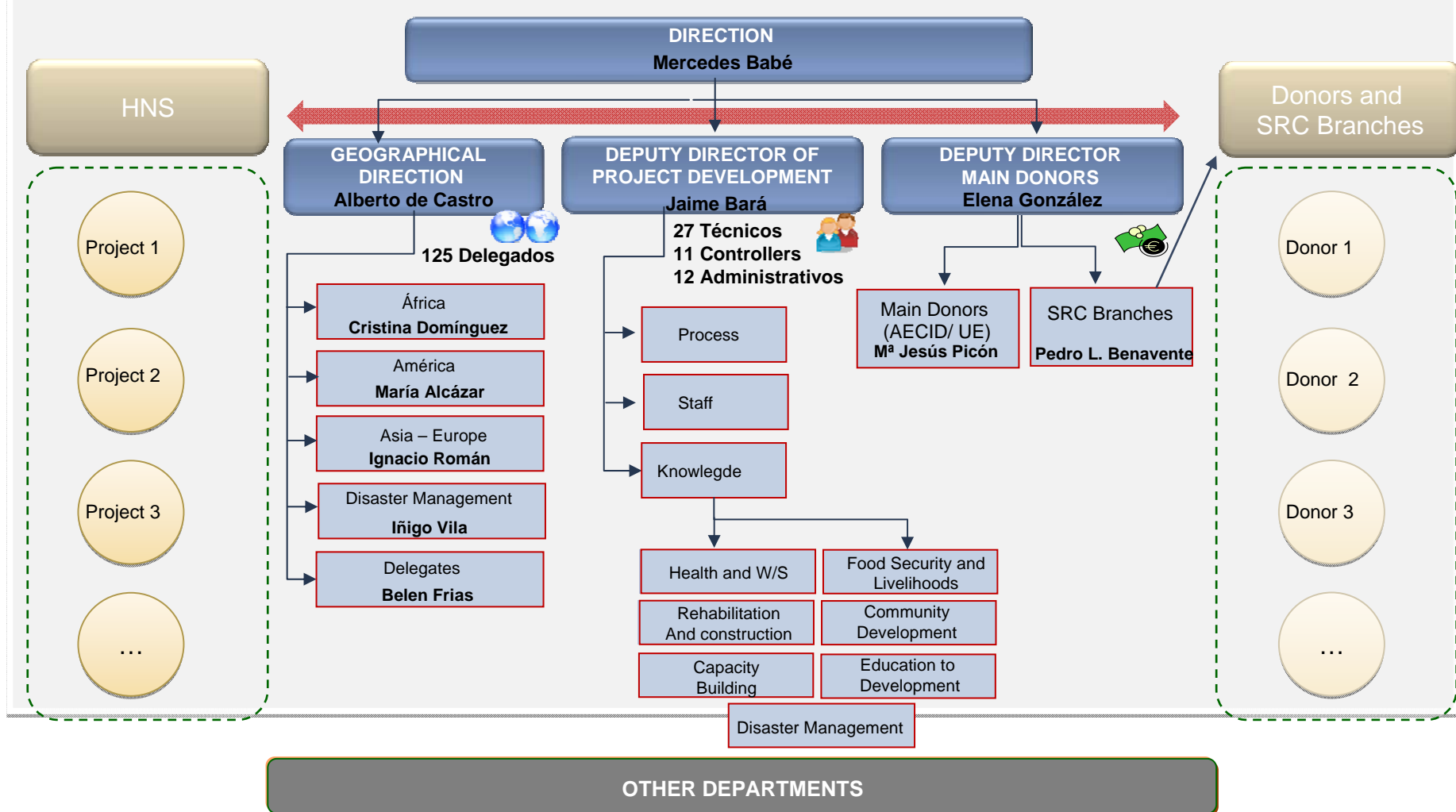


Cada vez más cerca de las personas



**Cruz Roja Española**

# Organization Chart



Cada vez más cerca de las personas



## Expatriates in the field

Continente	Destino / Mision	n° Deleg.
AFRICA	Africa Oeste	1
	Angola	3
	Burkina Faso	1
	Burundi	1
	Camerún	2
	Etiopia	2
	Gabon-Congo, RD Congo	1
	Guinea Bissau	1
	Guinea Ecuatorial	1
	Kenia	2
	Mauritania	1
	Mozambique	1
	Namibia	1
	Niger	2
	Ruanda	1
	Sao Tomé y Príncipe	2
	Senegal	4
	Sierra Leona	3
Tanzania	4	
Togo, B.Faso, C.Marfil, Niger	1	
<b>Total AFRICA</b>		<b>35</b>

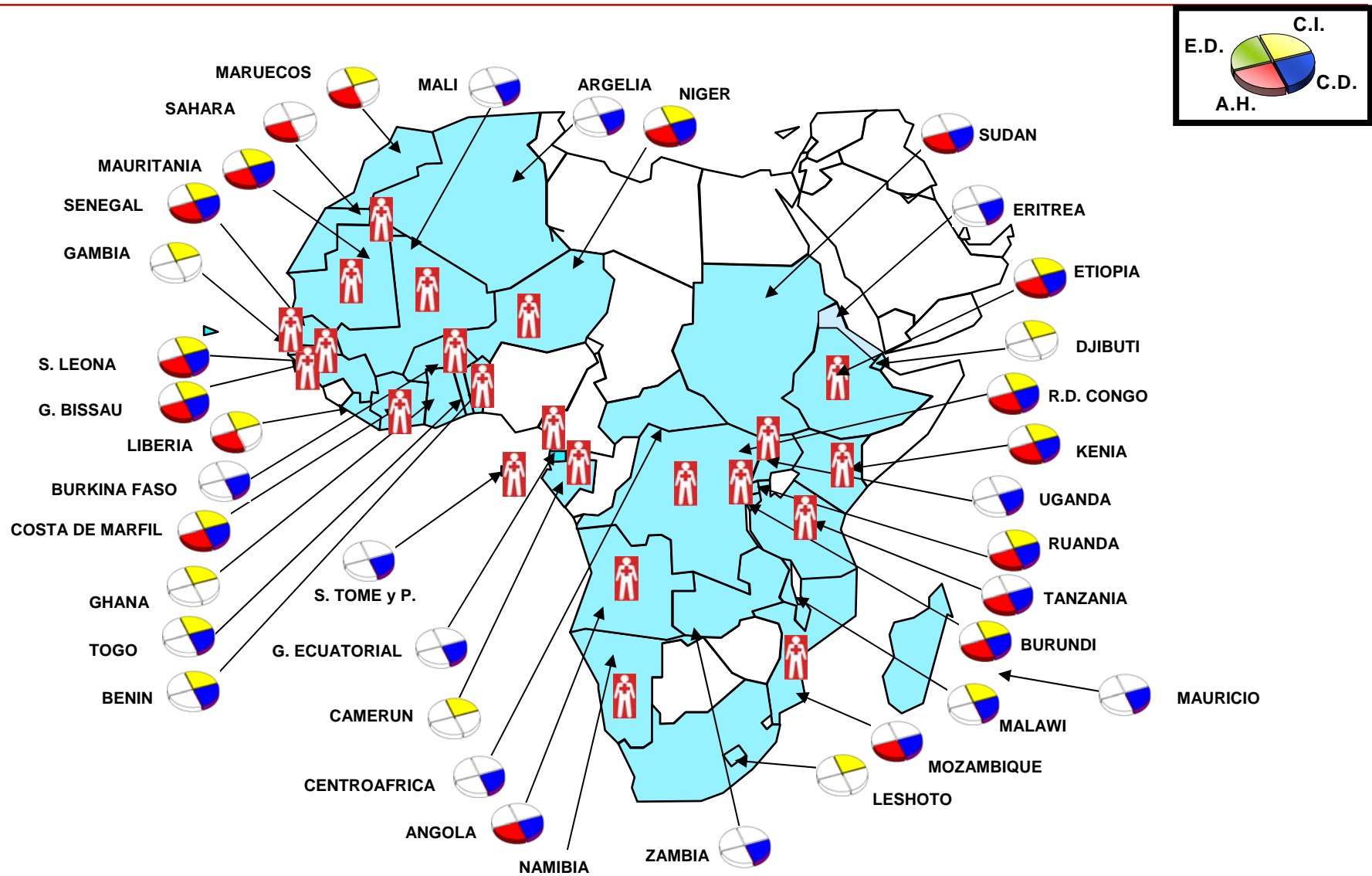
TOTAL DELEGADOS  
Y  
DELEGADAS

**120**

Continente	Destino / Mision	n° Deleg.
AMERICA	Argentina	1
	Bolivia	2
	Colombia	2
	Ecuador	1
	El Salvador	1
	El Salvador	1
	Guatemala	1
	Haití	42
	Honduras	2
	Nicaragua	1
	Panamá	6
Paraguay	2	
Peru	6	
Rep. Dominicana	2	
<b>Total AMERICA</b>		<b>70</b>
ASIA	Filipinas	3
	India	1
	Indonesia	2
	Malasia	1
	Palestina	2
	Sri Lanka	2
	Timor Oriental	2
<b>Total ASIA</b>		<b>13</b>
EUROPA	Serbia	1
	Albania	1
<b>Total EUROPA Y O.M.</b>		<b>2</b>

Cada vez más cerca de las personas



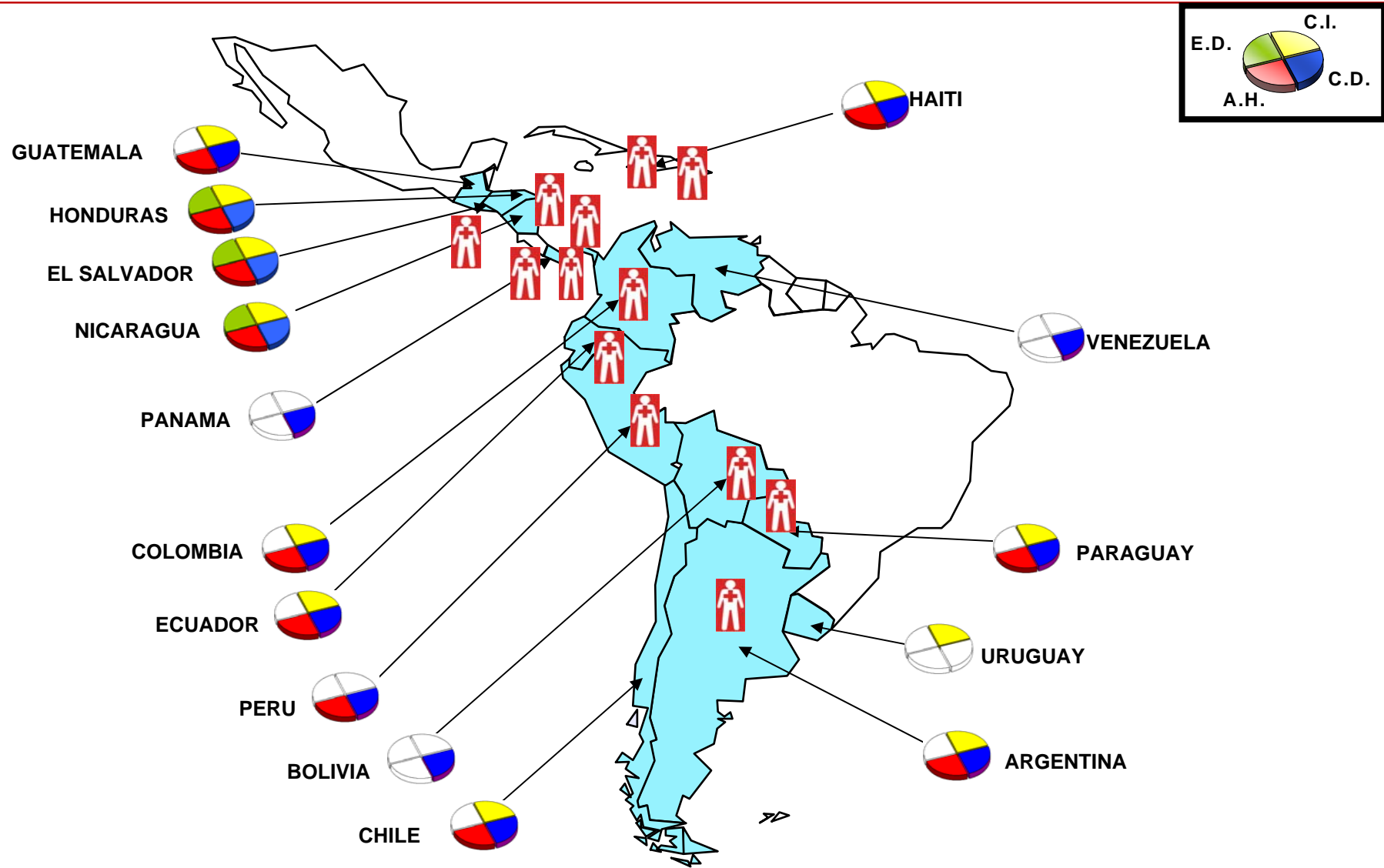


Cada vez más cerca de las personas



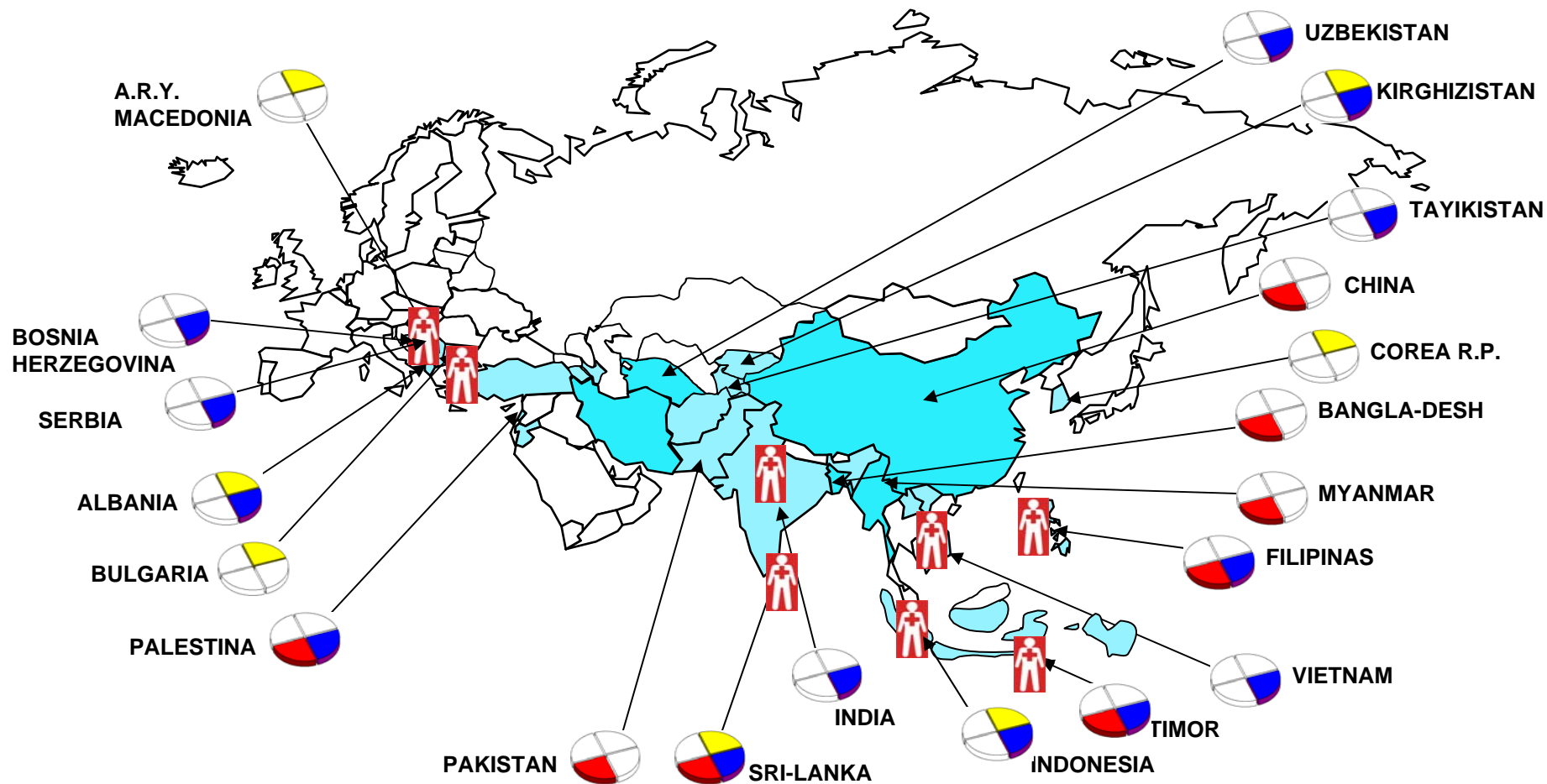
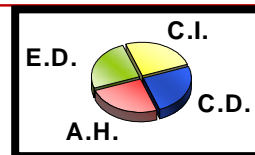
Cruz Roja Española





Cada vez más cerca de las personas





Cada vez más cerca de las personas





**SRC  
Cooperation  
Plan  
2007-2011**



**Cada vez más cerca de las personas**



- 
- Strategic and methodologic guidelines for intervention
  - States the strategies to implement after the growth and consolidation of SpRC in International field.
  - Main Challenges
    - Sectorial concentration
    - Advocacy at national and internacional level
    - SpRC as Learning organization

**Cada vez más cerca de las personas**



# **CROSSCUTTING PRIORITIES**

**Cada vez más cerca de las personas**



**Cruz Roja Española**

- 
- ❖ Gender equality
  - ❖ Disaster Management
  - ❖ Environmental protection

**Cada vez más cerca de las personas**



# **PRIORITY SECTORS**

**Cada vez más cerca de las personas**



**Cruz Roja Española**

- 
- ❖ Humanitarian aid
  - ❖ Community based health
  - ❖ Food security
  - ❖ Economical development and livelihood
  - ❖ Capacity building
  - ❖ Education for development, advocacy and social sensititation.
  - ❖ Migration

**Cada vez más cerca de las personas**





# Asia – Europe & Middle East Unit

**Cada vez más cerca de las personas**



**Cruz Roja Española**

# Asia - Europe & Middle East Unit



**Cada vez más cerca de las personas**



**Cruz Roja Española**

## HQ Staff



Juan M. Alonso  
**Controller**



Jesús Franganillo  
**Controller**



Alicia Mendoza  
**Controller**



Sara Hernandez  
**Desk Officer**  
Filipinas & Vietnam



Natalia Ruiz  
**Desk Officer** India, DRPK,  
Albania and Kosovo



Ana Torres  
**Desk Officer**  
Sri Lanka and East Timor



Ainhoa Mendioroz  
**Desk Officer**  
Indonesia



Concepción Villanueva  
**Desk Officer** Palestine  
and Middle East



Inés Dalmau  
**Asia Pacific**  
**Regional**  
**Representative**  
Malaysia (KL)



Cristina Alvarez  
**Admin & HR**



Nacho Román  
**Head of Unit**

Cada vez más cerca de las personas



# Europe & Asia Unit – Expatriates in the field



# SRC Representatives in the Field

## SERBIA

Amparo Moreno  
Representative

## PALESTINE

Deborah Rull  
Representative

Olivier Gillet  
Finance

## KUALA LUMPUR

Agnes Dalmau Gutsens  
AP Regional Delegate

## SRI LANKA

Julia Pastor  
Representative

Inmaculada Mata  
Finance

## INDONESIA

Oscar medina  
Representative

Silvia Crespo  
OD & Development

## ALBANIA

Carmen Villate  
Representative

## INDIA

Hector Palacios  
Representative

## FILIPINAS

Patricia Escudero  
Representative

Miguel Angel García  
Watsan Delegate

Marga Ledo  
Livelihood Delegate

## TIMOR LESTE

Sandra Romero  
Representative

Marisa Mialdea  
Finance

## VIETNAM

Marta Alejano  
Representative

Cada vez más cerca de las personas

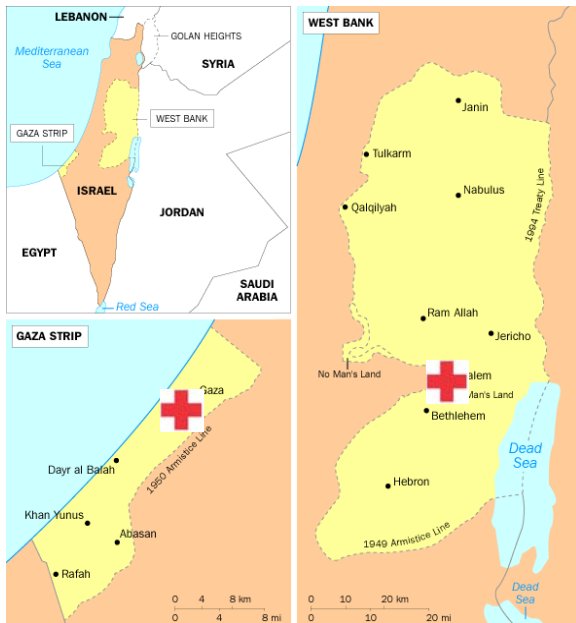


**Cruz Roja Española**



# Palestine

<b>Delegates</b>	<ul style="list-style-type: none"> <li>➤ 1 country representative based in Ramallah</li> <li>➤ 1 finance delegate based in Ramallah</li> </ul>
<b>Ongoing activities</b>	<ul style="list-style-type: none"> <li>➤ Strengthening of medical services of PRCS (Gaza Crises) and support of basic health public system.</li> <li>➤ Promotion of volunteers and community services.</li> <li>➤ Community-based Rehabilitation for people with disabilities.</li> <li>➤ Out of reach, support in emergencies interventions (Gaza strip)</li> </ul>
<b>Funding</b>	<ul style="list-style-type: none"> <li>➤ Spanish Agency for International Cooperation and Development (AECID)</li> <li>➤ Local governments and municipalities of Spain</li> <li>➤ European Union</li> </ul>
<b>Challenges</b>	<ul style="list-style-type: none"> <li>➤ Security situation</li> <li>➤ Access to Gaza</li> <li>➤ Strengthening of the local authorities.</li> </ul>



Cada vez más cerca de las personas







# Kosovo

<b>Delegate</b>	<ul style="list-style-type: none"> <li>➤ No expatriates, one local representative in Pristina who assumes the tasks and responsibilities of a delegate (Spanish speaker that favors the communication and distance training).</li> </ul>
<b>Status</b>	<ul style="list-style-type: none"> <li>➤ Spanish Red Cross is registered in the UNMIK register for NGO's. The special situation in Kosovo requires to be registered as NGO in order to be able to work in the area.</li> <li>➤ The implementation of the activities is done in accordance with the local branches of the Red Cross of Kosova. The HQ is informed about the progress on the activities, but it is not directly involved in the daily work.</li> </ul>
<b>Ongoing activities</b>	<ul style="list-style-type: none"> <li>➤ Socio-economic integration of women, based in vocational training for women and income generating activities.</li> </ul>
<b>Funding</b>	<ul style="list-style-type: none"> <li>➤ Spanish Agency for International Cooperation and Development (AECID) and local governments and municipalities of Spain</li> </ul>
<b>Challenges</b>	<ul style="list-style-type: none"> <li>➤ Scarce opportunities to receive funds due to the fact that backdonors does not provide funds to any project implemented in the Balkans.</li> </ul>

Cada vez más cerca de las personas





# Albania

<b>Delegates</b>	➤ 1 delegate based in Tirana
<b>Status</b>	<ul style="list-style-type: none"> <li>➤ Spanish Red Cross works through Albanian Red Cross</li> <li>➤ The implementation of the activities is done in accordance with the Albanian Red Cross HQ. Local Branches inform ARC HQ as well as SpRC.</li> </ul>
<b>Ongoing activities</b>	➤ Socio-economic integration of women, based in vocational training for women and income generating activities.
<b>Funding</b>	<ul style="list-style-type: none"> <li>➤ Spanish Agency for International Cooperation and Development (AECID)</li> <li>➤ Local governments and municipalities of Spain</li> </ul>
<b>Challenges</b>	<ul style="list-style-type: none"> <li>➤ Self-sustainability of projects</li> <li>➤ Scarce funding opportunities beyond 2010 due to the fact that AECID does not provide funds to any project in the Balkans.</li> </ul>



Cada vez más cerca de las personas





# Serbia



<b>Delegates</b>	➤ 1 delegate based in Belgrade
<b>SpRC Status</b>	<ul style="list-style-type: none"> <li>➤ SpRC works through Serbian Red Cross.</li> <li>➤ The implementation of the activities is done by the Serbian RC staff and volunteers. HQ works directly with the local branches and reports to SpRC Delegation</li> </ul>
<b>Ongoing activities</b>	<ul style="list-style-type: none"> <li>➤ Promotion of Human Values among children and youth.</li> <li>➤ Joint Program for Roma and Marginalized Groups inclusion through Education.</li> </ul>
<b>Funding</b>	➤ Swiss Agency for Development and Cooperation (SDC)
<b>Challenges</b>	<ul style="list-style-type: none"> <li>➤ Self-sustainability of projects</li> <li>➤ Funding opportunities beyond 2010</li> </ul>

Cada vez más cerca de las personas





# Bosnia Herzegovina



<b>Delegates</b>	➤ No SpRC delegates in the field
<b>Ongoing activities</b>	➤ Organizational development
<b>Funding</b>	➤ SpRC own funds
<b>Challenges</b>	➤ Funding opportunities beyond 2010

Cada vez más cerca de las personas





# Morocco



<b>Delegates</b>	➤ SpRC delegate based in Rabat
<b>Ongoing activities</b>	➤ Préparation de la population de la ville de fès pour affronter les catastrophes naturelles
<b>Funding</b>	➤ SDC ➤ CRM ➤ SpRC own funds

Cada vez más cerca de las personas



---

**Thank you for your  
attention**

**Cada vez más cerca de las personas**



**Cruz Roja Española**



Humanity

Imparciality

Neutrality

Independence

Voluntary Service

Unity

Universality



[www.cruzroja.es](http://www.cruzroja.es) 902 22 22 92