

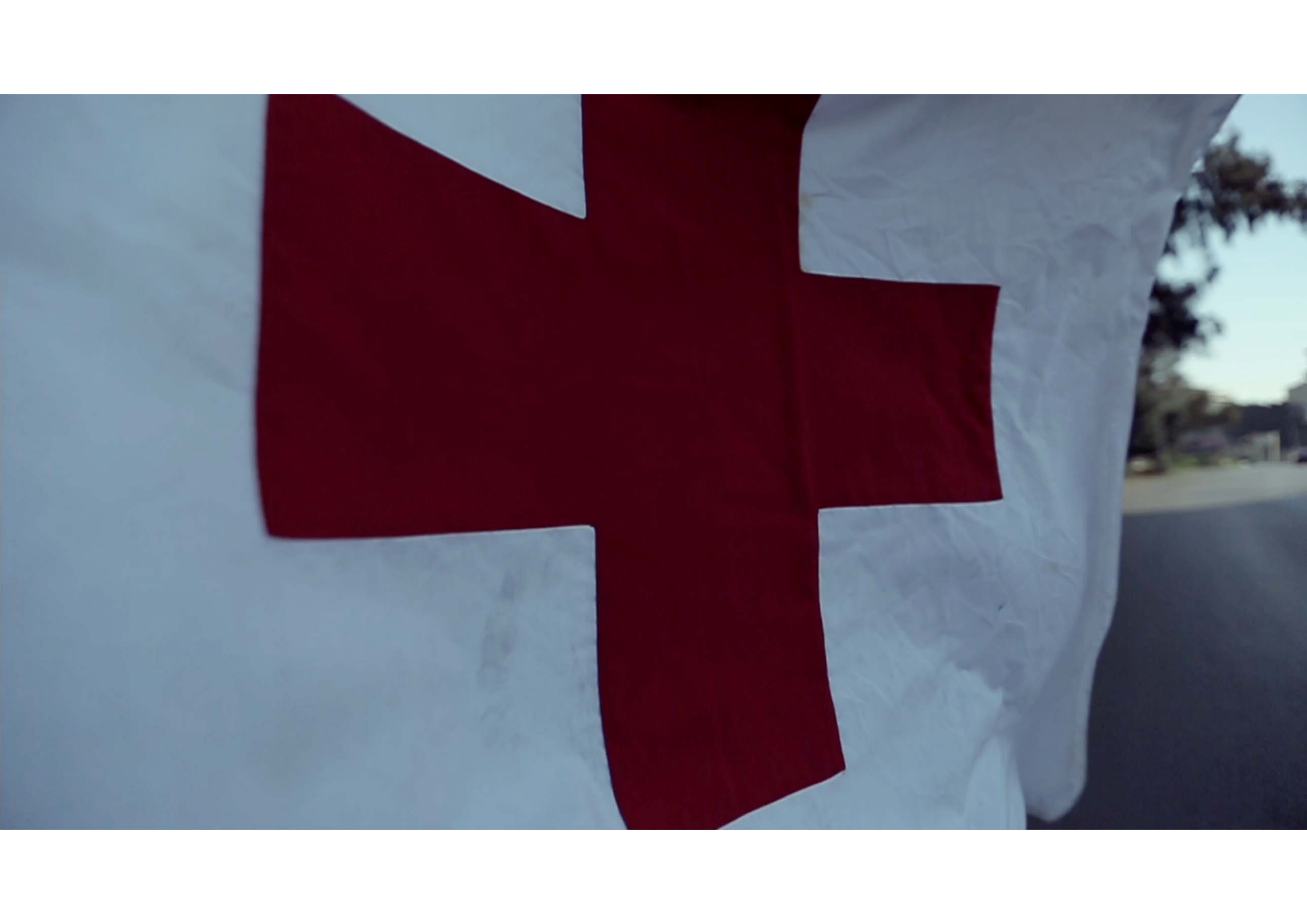


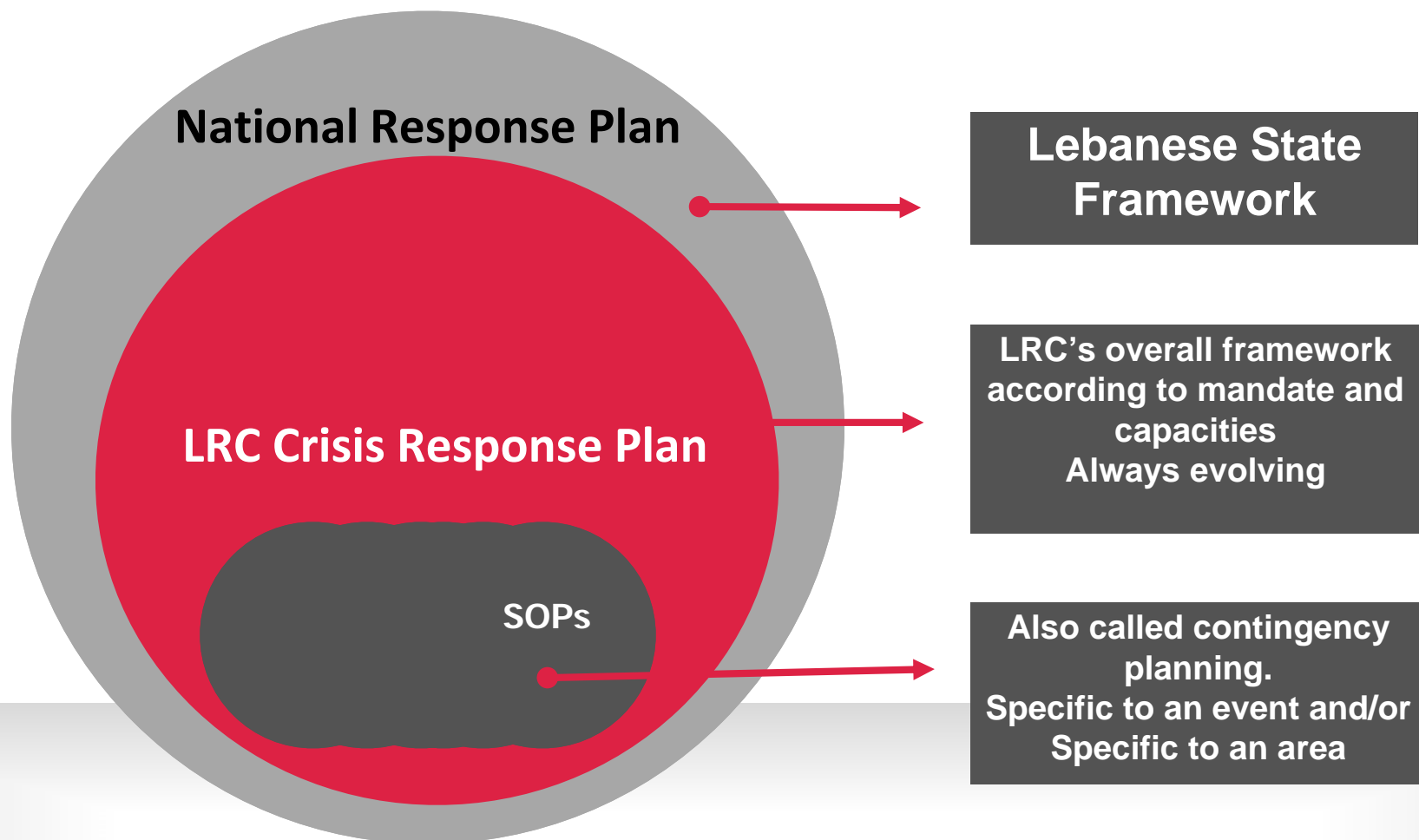
# Lebanese Red Cross

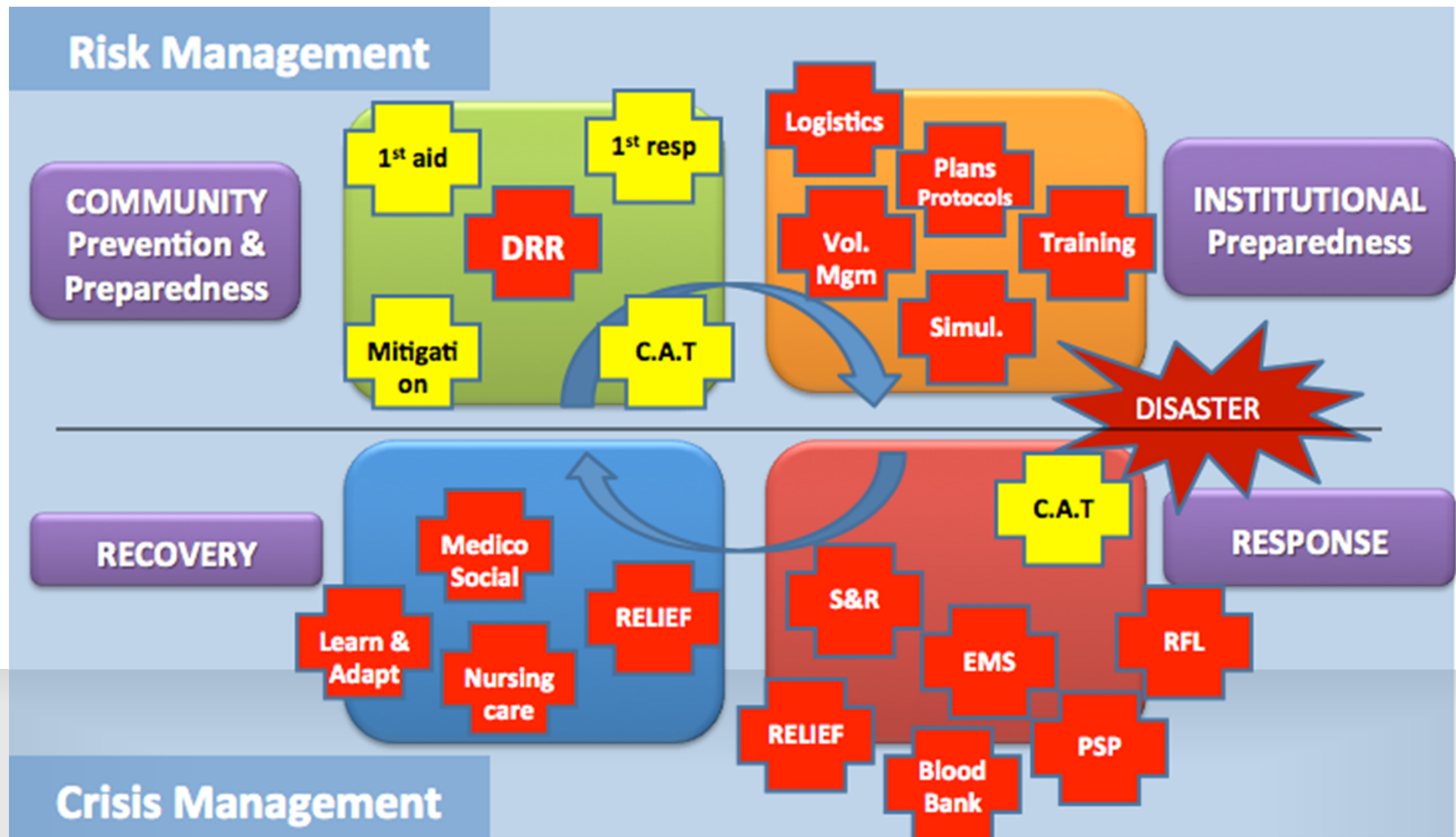
**Crisis Response and Preparedness**

*St. Marino - May 2015*











## Immediate

Triage and Immediate Aid

Casualty Clearing station

Hospital Coordination

Transport to Hospitals

Manage dead bodies

Assist with SaR

Ops room coordination

## DELAYED

Assess needs

Provide Blood units

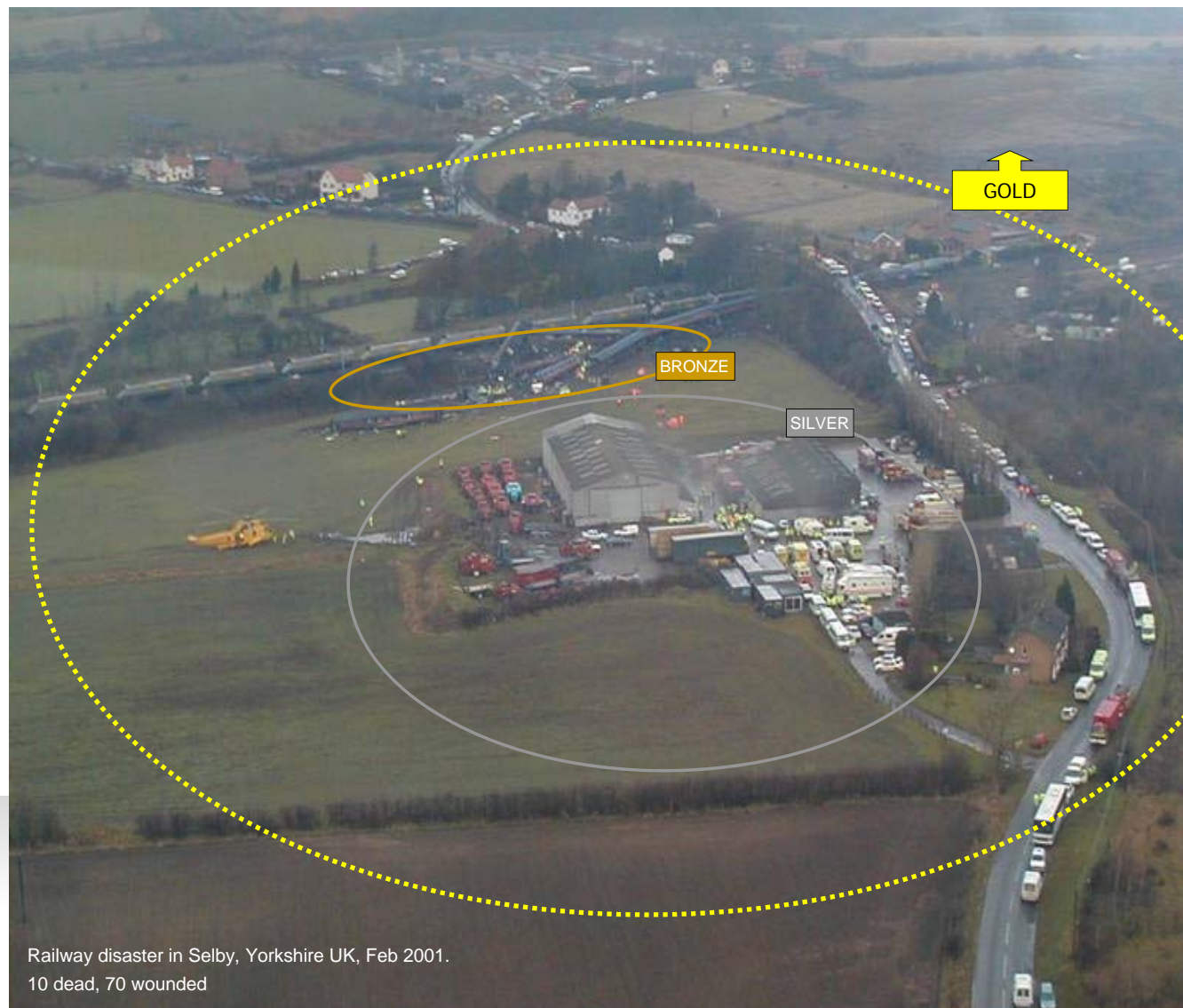
Restoring Family Links

Provide Psychosocial support

Provide Relief and Shelter

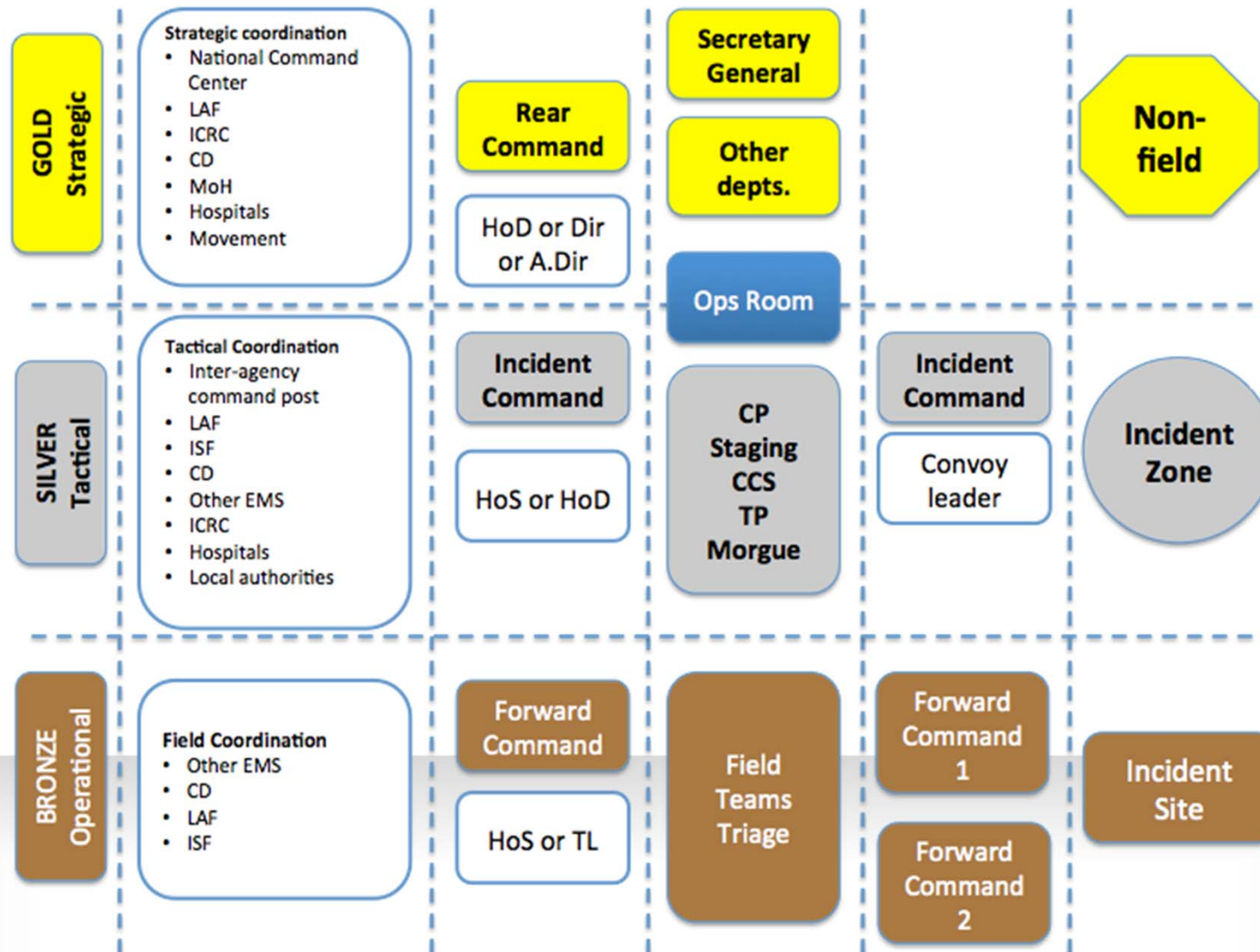
Provide Primary Health Care

Report



Railway disaster in Selby, Yorkshire UK, Feb 2001.  
10 dead, 70 wounded

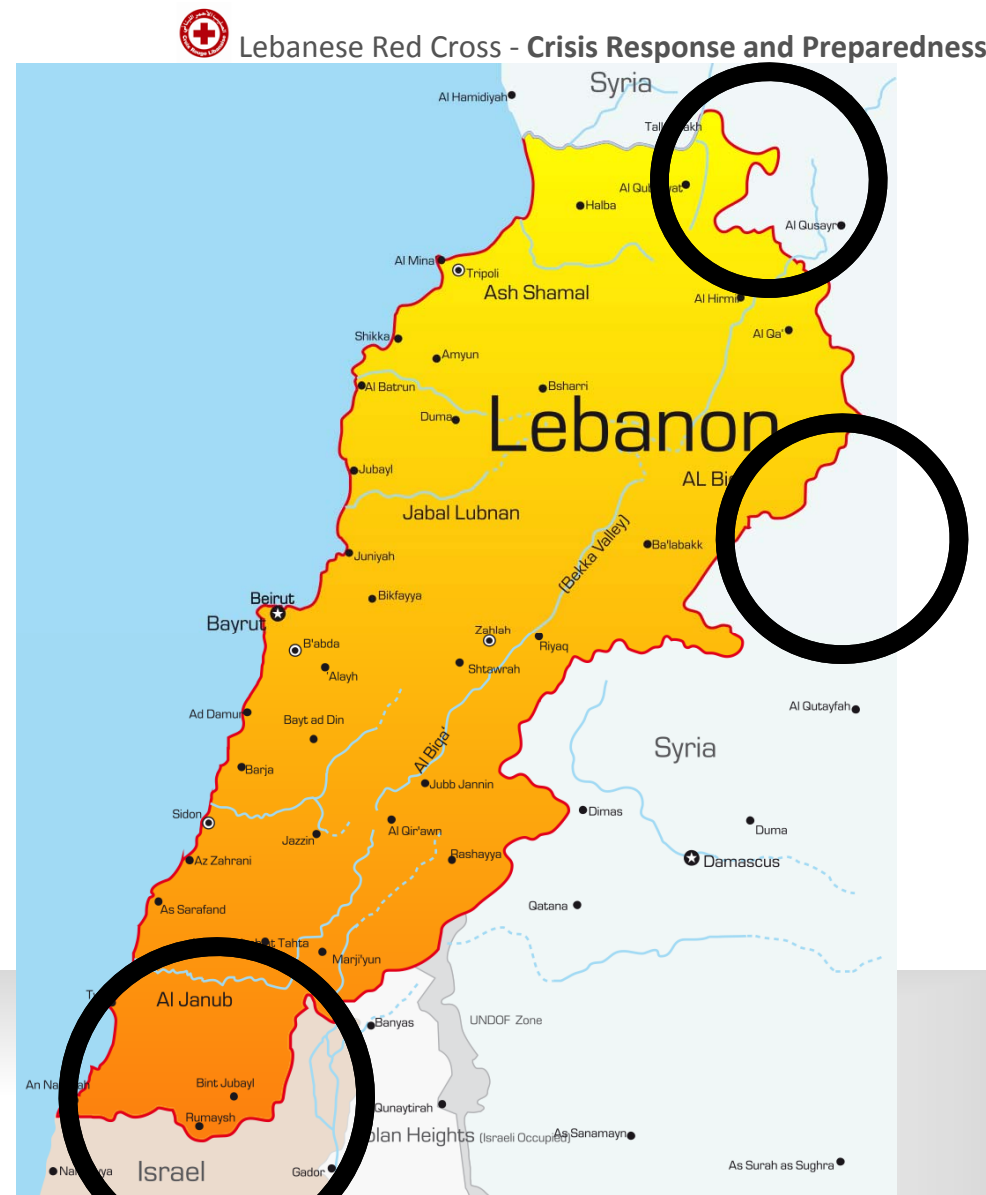




## Current Challenges and Response Planning

The situation in the region and in neighboring countries is highly affecting the situation in Lebanon. New Armed group presence has been increasing. In 2014, 6 Car bombs and suicide bombers claimed the life of at least 100 civilians. The tension increase with the presence of armed group in North of Bekaa border with Syria and North of Lebanon border with Syria.

Moreover, the challenges faced on the south border of Lebanon from the Israeli Armed Forces still continue with a situation that can deteriorate in hours.





### NATIONAL SOCIETY

The LRC has identified the vulnerable areas and a response preparedness training has been conducted in the 3 vulnerable areas.

Crisis Response training focused on the role of team leader, Head's of Stations and HQ staff.

As part of the response preparedness, the LRC developed SOPs with EMS stations that cover the vulnerable areas. The SOP's were developed based on multiple scenarios that might occur.

### PREPAREDNESS

### MOVEMENT COORDINATION

Movement coordination has also been an essential part of our crisis response and preparedness strategy.

Movement coordination meetings are always taking place and movement partners are being briefed on the situation.

This prepares movement partners on possible scenarios in which their support is needed.



Contingency Plan

Multiple scenarios have been developed

Teams have been trained on the scenarios

Coordination with IFRC and PNSs on possible needs

Coordination with ICRC - Field Hospital - DBM

Coordination with Non Movement partners - SDC



The main difficulties and challenges related to our context are:

Access - External Parties

NEW ARMED GROUPS - IS

Safety & Security of the Volunteer

IAF

Sustainability of the Service

Increasing demand on our services

Increasing number of refugees

After crisis continuity by maintaining the service



**15 MARTYRS**  
SINCE 1981

© Lebanese Red Cross



# Thank You

